

West Wittering Cricket Club 1919 – 2019



WW Cricket team outside the “Old House” circa 1920’s including Monty Marmont (Henry Royce’s private secretary)



WW Cricket team 2018 in front of the pavilion on the Millennium Meadow



Young WWCC Colts celebrate their end of season awards

Celebrating a Century of Cricket in the West Wittering community



THE FUTURE CENTENARY “BALCONY & LONG ROOM” - 2019.....

West Wittering Cricket Club 1919 – 2019

Celebrating a century of cricket in the West Wittering community



1. Introduction and History of WWCC

West Wittering Cricket Club (WWCC) has been an established Cricket Club serving the Witterings' community since founded in 1919.

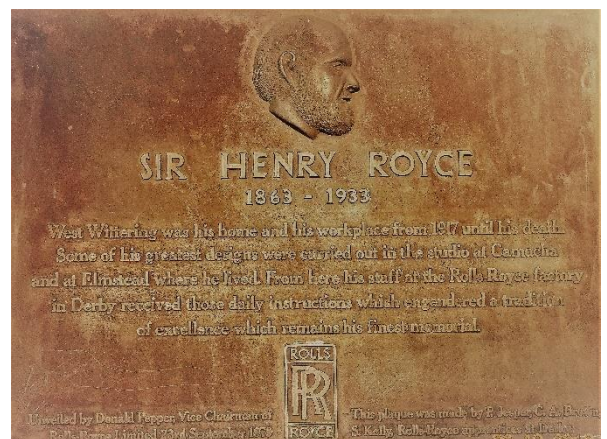
a) The origin of WWCC

Researching through the Chichester Observer & West Sussex Gazette in 1919: they reported: -

3rd July 1919 West Wittering School played Birdham School at Cricket with the return match on 17th July organised by WV Wray & L Brown. The series was shared one game all.

On 19th July 1919 West Wittering village enjoyed the "Peace Celebration Day". Festive gatherings were held during the day preceded by a Service of Prayer & Praise in the church. A Sycamore Tree was planted on the Green by Mr Stone. An afternoon tea meeting was followed by games (including cricket) and a concert was held in Berry Barn Lane field care of Mr Rudgewick of Cakeham Manor. In the evening Fireworks & Bonfire on Snowhill were provided by the Coast Guards witnessed by many Parishioners and an impromptu dance.

Sir Henry Royce (the genius behind Rolls Royce) moved into West Wittering village in 1917 due to ill health as a consequence of living near his factories in Derbyshire. He never took part in any pastime or sport - his recreation had been his work! At the end of the Great War he gathered around him a select few of his young dynamic design staff (from Derby) so he could continue his brilliant work. It was in West Wittering that the Merlin engine, as used in the Spitfire, Hurricanes and Lancasters, was designed.



It is believed that the young engineers living in West Wittering were the catalyst for the formation of the village cricket team in 1919, possibly on the back of the enjoyable cricket played on "Peace Celebration Day".

We know that WWCC played cricket in three locations within the village; between the wars it continued to be played in the field next to Berry Barn Lane, then moved to the WW Recreation Ground in Rookwood Road shared with football for many years until a dedicated field The Millennium Meadow was made available by the West Wittering Parish Council (WWPC) in 2002. Up until then the club was simply a Sunday (and T20 weekday evening games) social cricketing club.

b) Recent Achievements of WWCC 2003 to 2018

In 2002 “A Sports Development Plan” was produced which demonstrated what could be achieved if appropriate facilities were available. A very successful fundraising scheme (WWPC – land, car park & fencing, WWCC & community Local fundraising £42k, Chichester District Council Sports Grant £47k, The Woodger Trust matched the money raised) was launched and a new pavilion was built and officially opened by Johnny Barclay (Sussex cricket captain & England Tour manager) with a match against the National Theatre in July 2003. League cricket was played for the first time in 2004, together with a colts’ team. The club has since gone from strength to strength with up to 60 juniors and many years of cricket league promotions and currently comprises: -

1. 1st and 2nd XI teams playing in Sussex Division 5 West and Division 9 West respectively
2. All Stars boys & girls 5-8 years old
3. Under 10 Softball Pairs (10 fixtures locally in West Sussex)
4. Under 12 Hardball Pairs (6 fixtures locally in West Sussex)
5. Under 14 Hardball (9 fixtures locally in West Sussex)
6. Sunday Academy (14 fixtures in West Sussex) to help the 14+ join in with men’s cricket.
7. Midweek T20 (9 fixtures in West Sussex) mix of all club members
8. WWCC has Clubmark and adheres to the “Safe Hands” policy for safeguarding children in cricket.
9. WWCC has a number of qualified coaches and qualified umpires.
10. A Ladies squad was formed in September ready for matches in 2019



Such is the success of West Wittering Cricket Club that we are used by Sussex Cricket as the model for the development of grass-roots cricket across the county.

The WWPC own the field and WWCC have a long Lease on the clubhouse, square and Nets

2. WWCC Centenary Celebrations

a) Centenary Activities

As well as various events during the year the main celebration will focus around the Cricket Week 14-21 July 2019 when an all-inclusive community festivities will take place in the village to coincide with the Peace Celebration Day and cricket 100 years ago. This festival of cricket will conclude in a match against the **MCC on Sunday 21st July**.

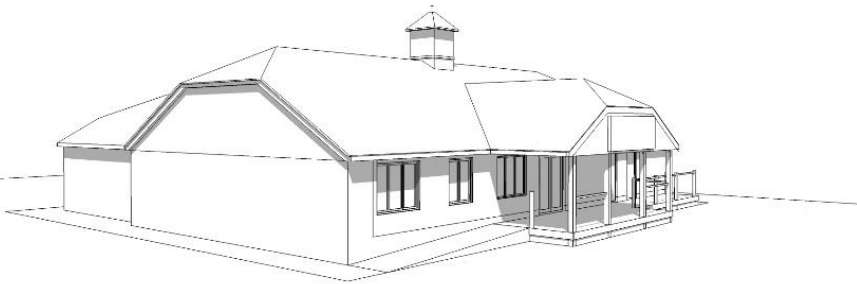
- Sunday 14th July - Houlihan Memorial Game, (Cricket World Cup Final & Set Up for week)
- Monday 15th July – Women’s Softball Cricket Festival
- Tuesday 16th July – School Cricket Match (Day) & Colts Reunion Match (Eve)
- Wednesday 17th July – WWCC vs Club Veterans T20
- Thursday 18th July – DIScoverABILITY Festival 10am-1pm with BBQ,
Evening WWCC vs Rolls Royce T20
- Friday 19th July – Junior Training (Eve) & community celebration (TBC)
- Saturday 20th July – 1st XI Match & Theme Night
- **Sunday 21st July – WWCC vs The MCC** – all welcome for this prestigious match



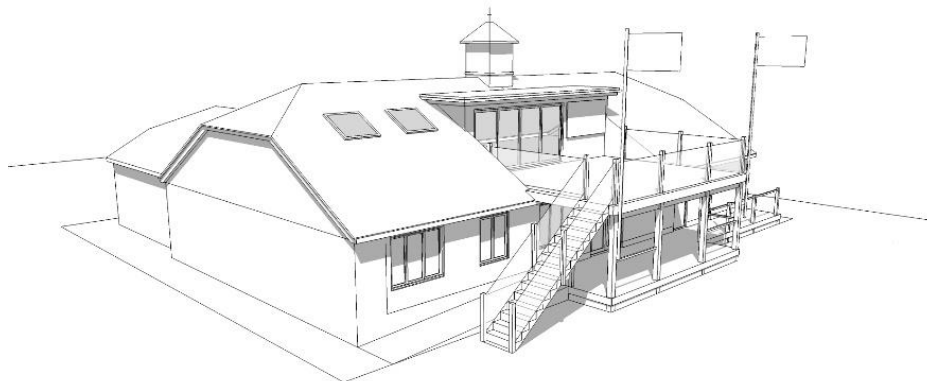
b) Centenary “Balcony & Long Room”

WWCC wish to recognise this significant milestone by leaving a commemorative memorial in posterity for the club, future generations of cricketers and the community to use and enjoy. The aim is to maximise the use of the pavilion by incorporating within the existing shape a new “Centenary Long Room in the loft space and balcony to improve viewing of the cricket field”

Before.....



.....after.



By adding the “Centenary Balcony & Long Room” to the pavilion WWCC will be able to become more financially stable and sustainable in the long term. This new feature will make the pavilion more attractive for both the cricket club and for other community functions/activities. The balcony will create a superb area for our valued volunteers; who score at our cricket matches.

The balcony will also attract more spectators to the club and thus more income from social membership. It will also provide young cricketers a better view and thus encourage new players.

The Centenary Long Room will provide a facility for the WWCC committee plus a function room for meetings, off-site Board Room and other community events.

The combination of the Long Room together with the balcony on a sunny West Wittering day will facilitate multi-functions from drinks parties, birthday and anniversary festivities to major club and community celebrations. A dumb waiter from the kitchen below will assist with serving food at these functions.

WWCC needs some key sponsors to make this vision become a reality - ideally in 2019

3. Proposition

For those sponsors who wish to be closely associated with WWCC and the local community they can become a “**Friend of West Wittering Cricket Club**” by making a significant contribution to this Centenary celebration project.

In return WWCC will make the clubhouse and associated facilities available plus.....

- A venue for off-site Board (and other) Meetings
- Team building activities (including use of showers after beach activities etc..)
- Play cricket on the ground with full use of the facilities (subject to WWCC fixture list)
- Provide advertising/publicity in the Fixture card & large banner on boundary of ground
- Promotion through website and WWCC active & well followed social media channels
- Promotion & good public relations with community sports club through articles in Community publications, Chichester Observer & County and National Cricketing Magazines etc.
- Catalogue photoshoot location linked with local history
- Individual **Life Membership** (£750 which includes up to 2 uses of the pavilion hire/year at no charge – subject to WWCC fixtures, availability etc)
- Memorial Plaque acknowledging all contributors in the “Centenary Long Room”

WWCC would also consider naming the new parts of the Pavilion with appropriate plaques related to sponsors suggestions eg

- Sir Henry Royce or **Long Room**
- Keith..... or Richard **Balcony**
-open to your suggestions.....
-

4. Financial Statement

We recognise that the scheme is ambitious but believe that, with the right community sponsors WWCC can make it a reality. WWCC have asked a local builder to price up the “Centenary Balcony & Long Room” and thus provide a budget for the project. The costs of the project are as follows: -

a) Architectural Drawings, Planning and Professional Fees	£ 2,000
b) Construction Drawings with Specification, Structural Design, CDM & Building regulations	£ 3,600
c) Construction	
i) Scaffolding, steelwork & erection, roof work, floor joists & dormer	£42,300
ii) Balcony decking, railing & glazing	£17,500
iii) Stairways x2, bi-fold doors	£ 7,000
iv) Insulation, fire protection, plastering, electrics, plumbing/heating,2 nd fix, decoration	£18,500
v) Project Management	<u>£15,000</u>
Total Project cost	<u>£105,900</u> +VAT



Pledge of sponsorship

1	Contact Name (and position)	
2	Business/other	
3	Address	
4	Email	
5	Phone/mobile	
6	How you can support WWCC with this Centenary Project	
7	Your Pledge and/or... Request for Life Membership £750	
8	Other Suggestions, comments/feedback	

For further information please call/email or scan your Form and email to:-

Jim Robertson – President WWCC 07788 422222 jim.robertson151@gmail.com

Shaun Standing – Chairman WWCC 07788 185328 s.standing@btinternet.com

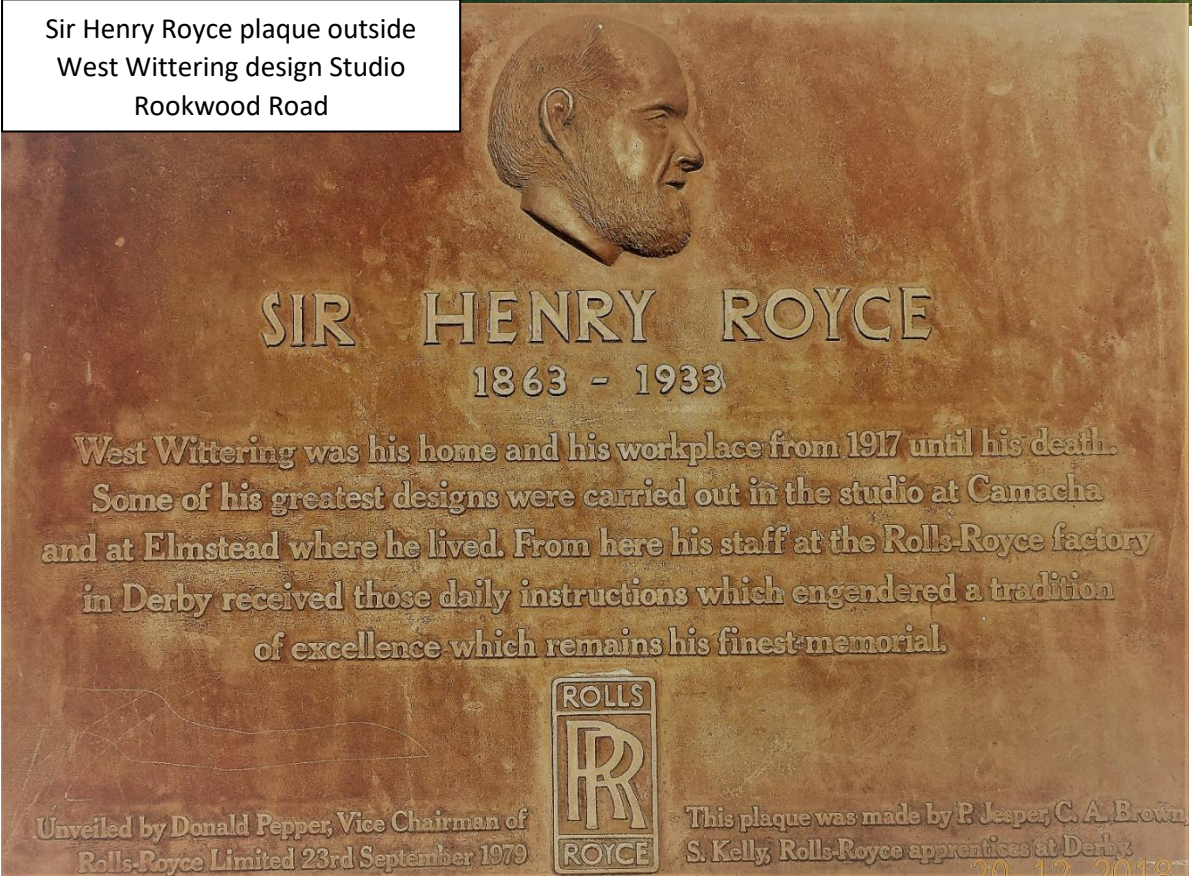
And/OR post to:- WWCC C/O 18 Seagate Court, Shore Road, Witterings, PO20 8DX



The WW Ladies Cricket squad warming up, practicing and lined up for photo call



Sir Henry Royce plaque outside West Wittering design Studio Rookwood Road



West Wittering Cricket Club 1919 – 2019